

PREMIERE OFFICE SUITES for Lease

3000 W. Mac Arthur Blvd., Santa Ana, CA



Building Amenities:

- Available Suites from 1,000 to 6,500 sq. ft.
- Six Story Building - Elevator Served
- Flexible Floor Plans
- Full Service Gross Leases
- High Tech Building Security
- Reserved Underground Parking + Free Surface Parking
- Professionally Managed
- Minutes to South Coast Plaza and 405 Freeway



Southwest
 **Commercial**
Commercial Real Estate Services

For further information contact:

Dennis De Meis, Broker License #00596156

ddemeis@swcre.com

Jordan De Meis, Assoc. Broker License #01312030

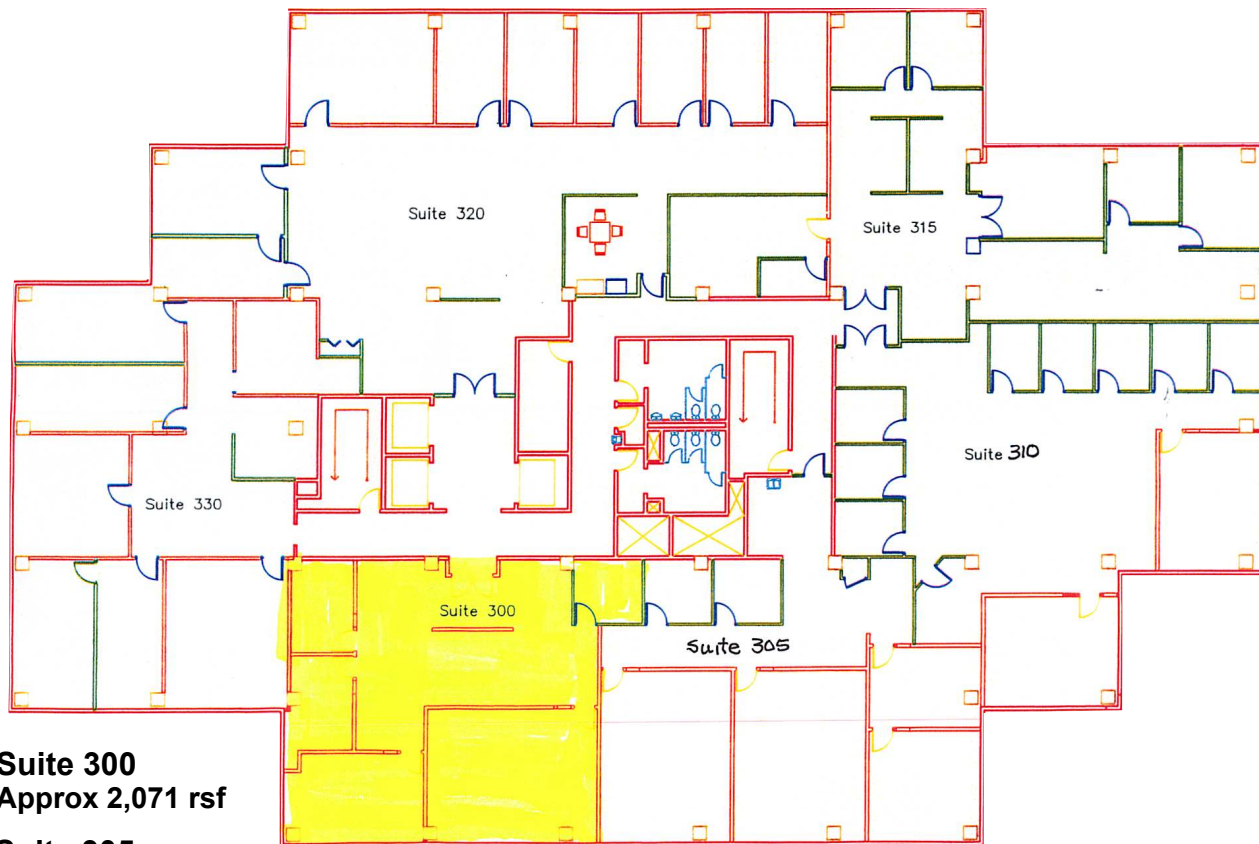
jdeimeis@swcre.com



swcre.com

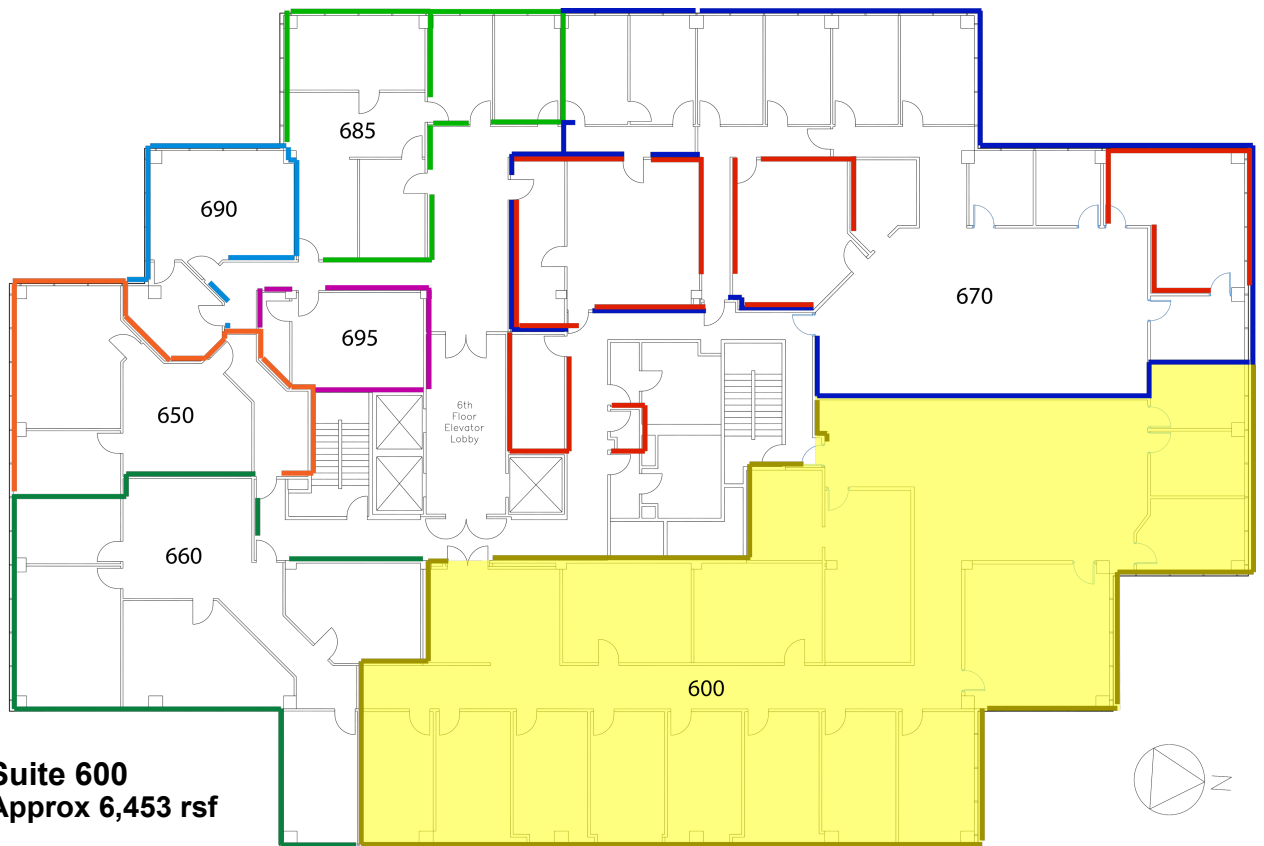
714-434-4831

Although all information furnished regarding property for lease is from sources deemed reliable, such information has not been verified and no express representation is made nor is any to be implied as to the accuracy thereof.



Suite 300
Approx 2,071 rsf

Suite 305
Approx 2,556 rsf



Suite 600
Approx 6,453 rsf

