

FOR LEASE

26150 ENTERPRISE WAY SUITE 300 (A) LAKE FOREST, CA

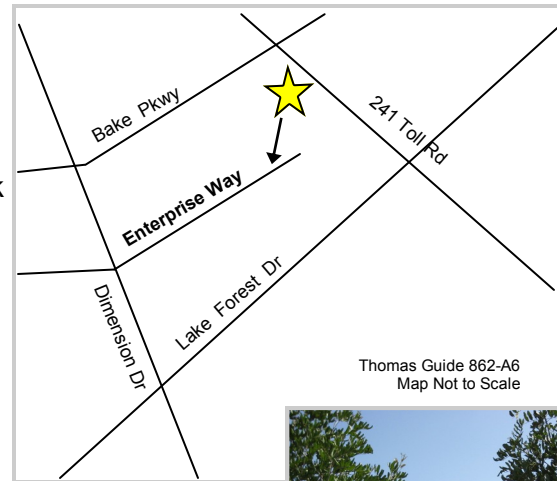
ENTERPRISE TECHNOLOGY CENTER

APPROXIMATELY
2,295 SQ. FT.



FEATURES

- Ground Floor Space
- High-Image Business Park
- 3:1 Parking Ratio
- Functional Office Space Plan
- 3 offices, Conference Coffee Bar/ Break Room
- 1 Roll-up Door
- 22 Foot Warehouse Clear Height
- Fire Sprinklered
- Corporate Campus Feel



Thomas Guide 862-A6
Map Not to Scale

For information contact:

Jordan De Meis

Lic# 01312030

jdemeis@swcre.com

Dennis De Meis

Lic# 00596156

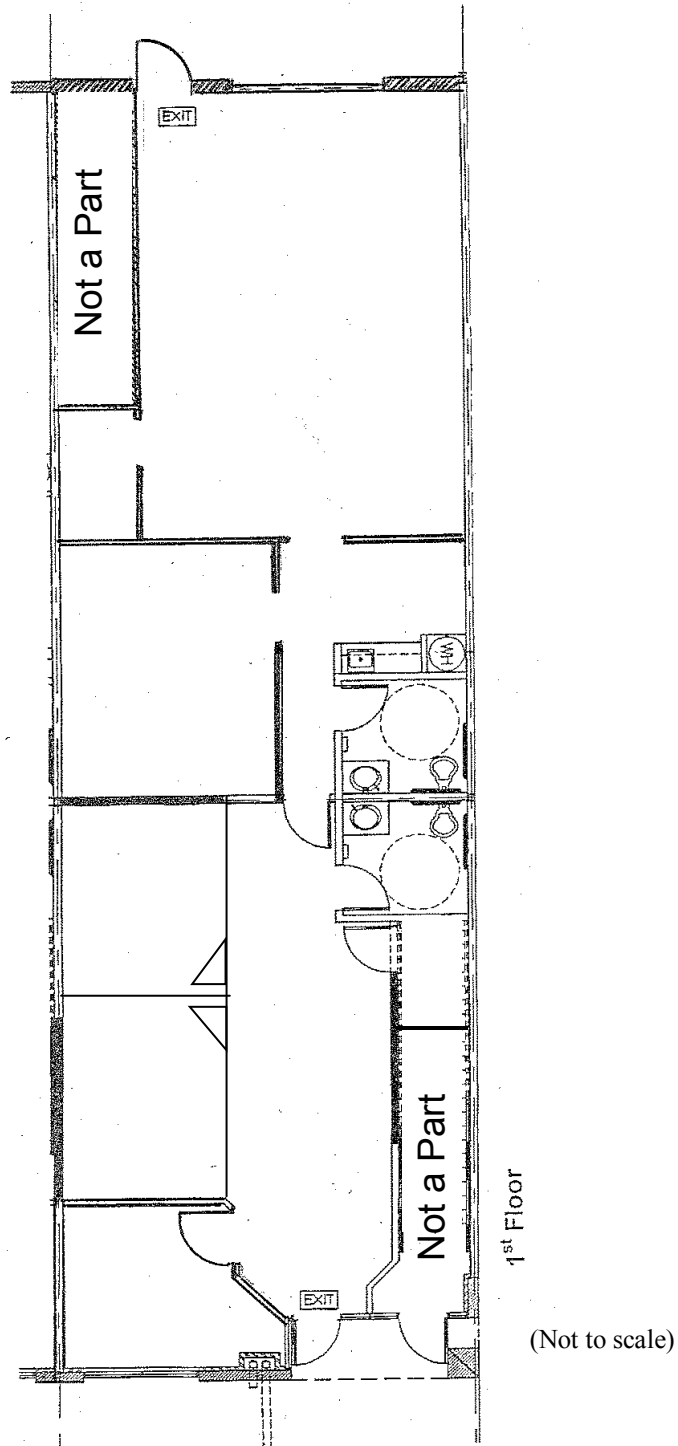
ddemeis@swcre.com

Southwest Commercial
3000 W MacArthur Blvd.
Suite 510
Santa Ana, CA 92704
714.434.4831



Floor Plan

26150 Enterprise #300 (A)
Lake Forest



Southwest Commercial
714.434.4831